



**SUITCASE
THEATRE**



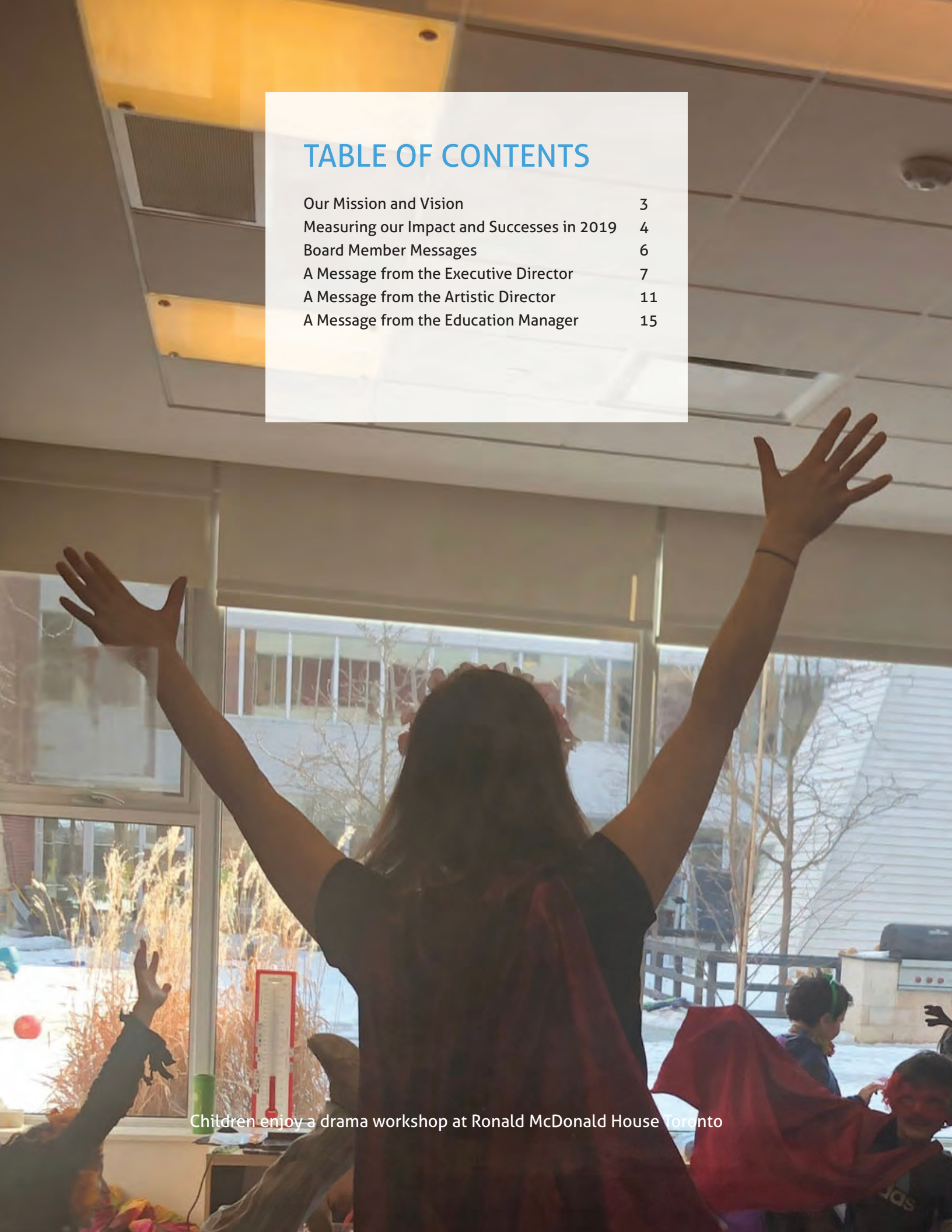
ANNUAL REPORT

JANUARY 2019 – JUNE 2020

SUITCASE THEATRE ARTS AND EDUCATION OUTREACH INC.

TABLE OF CONTENTS

Our Mission and Vision	3
Measuring our Impact and Successes in 2019	4
Board Member Messages	6
A Message from the Executive Director	7
A Message from the Artistic Director	11
A Message from the Education Manager	15

A woman with long dark hair, wearing a black top and a red cape, stands with her back to the camera and her arms raised high in the air. She is in a room with large windows that look out onto a snowy outdoor area with trees and a building. Other children, some also wearing red capes, are visible in the foreground and background, some with their arms raised. The room has a modern ceiling with recessed lighting and a white wall.

Children enjoy a drama workshop at Ronald McDonald House Toronto



OUR VISION

Inspire children and youth to develop confidence, character and kindness.

OUR MISSION

Create and facilitate theatre experiences that are accessible to all and provide a positive and lasting influence on children and families.

STRATEGIC OBJECTIVES

- Provide children and youth outstanding experiences in all aspects of live theatre production and creative activities.
- Deliver creative outreach programs for children in priority schools and neighborhoods.
- Nurture healthy well-being through inclusive messaging about timely social issues such as bullying, appreciation for diversity and creative problem-solving.
- Explore and develop relationships with strategic partners to ensure program sustainability.
- Create, develop, and implement interactive curriculum-based programs with arts professionals and educational consultants where everyone has a place in a fun, nurturing environment.

BOARD OF DIRECTORS

Dr. Bernard Lawless, Chair
Tiffany Jay, Secretary
Julian DeZotti
Brian Jamieson

OUR TEAM

Suitcase Theatre recognizes the inspiring talents, commitment and professionalism of our staff, cast and artist educators:

Tyler Check, Artistic Director and Tristan Hernandez, Music Director

Victoria Snell, Workshop and Education Manager

Cast Member and Stage Managers: Macayla Paris, Benjamin Todd, Emily Meadows, Jordan Kenny, Erin Humphreys, Alicia Barban and Douglas Walker

Arts Educators: Jess Vandenberg, Shannon Hancocks, Morgan Joy, Adam Bailey, LeeAnne Galloway, Alicia Barban, Alanna Balicki, Warren Bain, Dina Cipin, Joan Barrington, Andrea Mammoud, Tereka Tyler Davis, Michael Iliadis, Najla Nubyanluc and Alexander Mantia

MEASURING OUR IMPACT AND SUCCESSES IN 2019

Thanks to our supporters and revenue earned through high quality programming and arts experiences, Suitcase Theatre continues to expand our reach into new communities and schools through our educational partnerships.



On August 10th, Olivia Keady and 10 other young artists in South Delta, British Columbia put on a benefit concert in support of Suitcase Theatre.

"We as young artists want to help connect young people to their inner artist and provide a safe space for young people to find their most authentic selves. We want to make theatre more accessible to everyone; whether they are limited by physical ability, financial stability, or opportunity. We feel that our lives have been largely influenced by the privilege of participating in theatre or performing arts programs in our community. We decided to pay it forward by sharing our love for theatre and the arts in a night of music, dance, theatre and song!" - Olivia Keady



The Reveal Masquerade Gala Committee donated \$2000 for our work in schools.



2019-2020 SUPPORTERS

- Donations In Memory of Mary Lou Gilchrist
- Dr. Bernard Lawless
- Johanna Weaver
- The MacLellan/Jay Family
- The Reveal Gala Committee
- Rosedale United Church – Agency Outreach Committee
- Olivia Keady and Artists from South Delta, British Columbia
- Cassidy and Avery Bryce
- The Sutherland Family
- All Saints Kingsway Anglican Church
- The George Hull Centre for Children and Families
- The Gilchrist Family

MEASURING OUR IMPACT AND SUCCESSES IN 2019

Celebrated our 7th year in partnership with All Saints Kingway Church and our camp

First customized workshop program delivered at AlphaBee, a leading provider of Applied Behaviour Analysis therapy to children and youth diagnose with autism and other related disorders.

Expanded our workshop program from Grade 5 to Grade 8 students

Over 1500 newly designed workshop brochures delivered to educators at all school performances

We launched a new logo in celebration Suitcase Theatre's 10th year.



Nominated for a GEM Award for excellence in Etobicoke-Lakeshore



#CanadaPerforms Live Stream: 1239 viewers

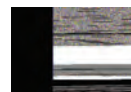
Live Watch Party on Facebook during Mental Health Week (May 5th 2020): 862 viewers

Remember to Breathe Sing-A-Long: 375 views

Stronger Together Cast Album Playlist on YouTube: 250 views



Start of 2019: 156 followers
As of June 2020: 409 followers



Start of 2019: 9 YouTube subscribers. As of June 2020: 52 subscribers.



Facebook follower increase of 12%

BOARD MEMBER MESSAGES

Why I Belong

"I choose to belong to the Suitcase Theatre board because I believe in the power of the arts to shape character and build community.

Theatre – the perfect amalgam of song, lyric, dance, and drama – invigorates. Children especially gravitate to the artform. It invigorates, liberates and equalizes – anyone can participate.

The arts ask us to step out of our comfort zones, see and hear differently, and experience difference differently.

When the world goes into lockdown, where do we turn? To the captured performances on our smart screens. To seek out lessons in dance, movement, and musical instrumentation.

When the world cries out in pain, where do we go? To the streets, to raise our voices in songs that unite.

When the world seeks interpretation and support, where do we look? To programs like Suitcase Theatre's Stronger Together production that shines a helpful spotlight on mental health and draws on community partners like George Hull Centre for Children and Families to pool expertise and resources.

But theatre's garden needs constant tending. It needs community support – financial and in-kind to grow and blossom.

To flourish in school performances and workshops, Suitcase Theatre requires the generosity of individual and corporate benefactors – organizations and people who believe in the power of theatre to raise heads and lift hearts.

I believe in Suitcase Theatre's ability to bring smiles, skill and collegiality to children and, in so doing, strengthen their character and our collective sense of community.

That's why I belong to the Suitcase Theatre board. And it's why I encourage everyone to support its programs.

Brian Jamieson

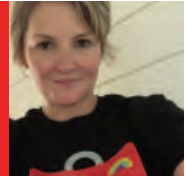
Suitcase Theatre continues to innovate and creatively produce interactive musicals, workshops and arts experiences that carry important messages for children. Our family really enjoyed Suitcase Theatre's latest original musical, Stronger Together: Opening Doors to Mental Health. This thoughtful production celebrates the uniqueness of each child while teaching important and positive messages about navigating one's own emotions and feelings and those of others. The show's creative, toe-tapping music and sensitive script help children to better understand mental health and speak openly about their thoughts and feelings which is so important now more than ever.

Tiffany Jay

Empathy. Compassion. Understanding. These are qualities we must possess and must teach our children. In our actions, in our words, in our culture. Live theatre gives us an opportunity to reflect the best and worst in ourselves, to show us what's possible, how we can do better. While health concerns currently limit the ability for all of us to come together as a community through live performance, its spirit lives on in the digital space and Suitcase Theatre will adapt to that conversation. Through our organization and through our art, Suitcase Theatre promises to listen to the voices being silenced, and help tell their stories. The world is watching. And so are our children.

Julian De Zottl

A MESSAGE FROM THE EXECUTIVE DIRECTOR



This Annual Report highlights Suitcase Theatre's work over the past year and a half – as well how we made every effort to pivot in light of COVID-19. The trust and loyalty of our supporters and donors as well as key staff members including Artistic Director, Tyler Check, Workshop and Education Manager Victoria Snell, our talented cast members, volunteers and Board Members during this time has been the heartbeat of the organization. Our future success is dedicated to them.

With a bold new logo, strong community partnerships, a widely acclaimed new production, *Stronger Together: Opening Doors to Mental Health*,

strengthened relationships with educators and school boards, a new school workshop program linking mental health with the arts, ongoing work with Ronald McDonald House and Sick Kids Hospital and the continued success of our camp program as our primary revenue generator – Suitcase Theatre was poised to gain momentum and fulfil our mission to “create and facilitate theatre experiences that are accessible to all and provide a positive and lasting influence on children and families.”

One of the most beneficial partnerships that Suitcase Theatre formed in 2019 was with The George Hull Centre for Children and Families. Suitcase Theatre was able to consult with key mental health professional advisors to develop *Stronger Together*, a new

production which carefully addresses mental health issues that children face daily. Their support was instrumental in opening new doors for Suitcase Theatre, elevating the theatre experience for our audience and reaching more children and families with our school and community performances. The cast was able to use space at George Hull

Centre to rehearse the show as an in-kind donation on top of the mental health guidance offered in the content creation of *Stronger Together*.

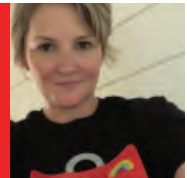
The launch of *Stronger Together: Opening Doors to Mental Health* at Solar Stage at Wychwood Barns in September 2019 marked the first official

public launch of a Suitcase Theatre performance. Invitations to educational partners were extended to preview the show and Suitcase Theatre was able to strengthen relationships with Boards of Education, especially The Toronto Catholic District School Board (TCDSB). Following the launch, Suitcase Theatre was invited by the Chief of Mental Health and Well-Being at the TCDSB to perform in under-resourced schools and participate in their mental health symposium, *Stop the Stigma*, in February 2019.

Our Play it Forward program which enables a school to donate a show to a school in need continues to be a major draw and Suitcase Theatre is grateful to The Tachane Foundation as a main donor behind this program's success. *Stronger Together* was also funded by

“Suitcase Theatre was able to pivot to an online platform, reimagine our content and programming, reinvigorate our vision to help children discover their true selves, celebrate diversity and come together, stronger, through the arts.”

A MESSAGE FROM THE EXECUTIVE DIRECTOR



The Tachane Foundation and Suitcase Theatre graciously acknowledges their ongoing support over the past five years.

Suitcase Theatre was also the recipient of a touring grant from The Toronto Arts Council which went to funding school tours and performances. The support from the Toronto Arts Council also represented recognition of our work in creating accessible arts experiences for all children and we will nurture relationships with granting bodies and donors moving forward.

Community partnerships are essential for our work. This past year, we again were welcomed at All Saints Kingsway Anglican Church for our camp programs at a reduced rental fee, a valued relationship that now spans seven years. We also worked with the City of Toronto Parks, Forestry and Recreation department and held a free community performance with Ken Cox Community Centre at Father John Redmond Catholic Secondary School and Regional Art Centre.

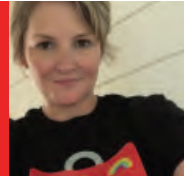
Over the past year, Suitcase Theatre has really come to understand the importance of having diversity and equal representation at the forefront of our mandate. The injustices that have been brought to light through social media and movements such as Black Lives Matter have helped us take a much deeper look at our commitment. It is our responsibility to ensure that everyone is given the same opportunities and access to resources and to reassess what it means to be an ally. Suitcase Theatre is committed to ensuring that our Board of Directors, staff, performers, and arts educators will honour and represent all people equally.

During the auditions for *Stronger Together* this past April, the casting call that was sent out indicated Suitcase Theatre's ethno-cultural casting mandate, "Suitcase Theatre is committed to reflecting our community in all of its diversity. We encourage actors from all cultures, races, ethnicities, and gender identities, as well as all mental and physical abilities to apply for an audition." As we continue to strive for greater equality, we understand that more needs to be done on our part to seek out and establish connections with BIPOC artists and arts educators in our community. Suitcase Theatre is dedicated to learning and growing so that we are better able to support artists of all cultures, races, ethnicities, sexual orientations, gender identities and abilities.

Sick Kids Hospital workshops that are supported by Boehringer Ingelheim Inc. and Rosedale United Church have focused on inclusivity. Working with young people with exceptional needs and offering them the platform of performance has been well received though the work of arts educator Morgan Joy and DramaWay. The monthly workshops at Ronald McDonald House also continue to be popular and Suitcase Theatre was invited to double their workshop programming at RMH this past year because of the success of our workshop programming. With a new grant or donor, this could become a reality and working with a grant writer to explore a new donor base that parallels our work was undertaken in the fall of 2019.

The school workshop program, led by Education and Workshop Manager Victoria Snell, was redeveloped to increase the reach from kindergarten to Grade 8. Our new workshop content was developed by arts

A MESSAGE FROM THE EXECUTIVE DIRECTOR



educators and vetted to reach curriculum benchmarks and guidelines established by the Ministry of Education. Funding for arts programs like our class workshops remains a challenge for schools and our goal is for parent councils to dedicate an annual arts budget to ensure that funding exists for the arts in much the same way as it does for STEM (Science, Technology, Engineering and Math) programs.

Due diligence and accuracy in accounting are taken very seriously by Suitcase Theatre. Managing budgets prudently has enabled success, resulted in measured growth – and ultimately will enable us to weather the COVID-19 crisis. A new relationship with Young Associates to oversee all accounting and financial reporting to Canada Revenue Agency has been a tremendous help to ensure we continue to follow guidelines for the not-for-profit sector and to continue to make smart decisions with the limited budgets we work with.

COVID-19 hit Suitcase Theatre at the time of year when our organization was poised to generate the most revenue. School tours of *Stronger Together* were cancelled, school workshops were postponed to a later date and our popular March Break and Summer Camps were also cancelled. We estimate a loss of \$70,000 in earned revenue but as equally critical was the loss of work for our arts educators, cast members and key staff. While many have been able to collect CERB (Canadian Emergency Relief Benefit), the impact of COVID-19 has hit the performing arts not-for-profit sector especially hard. Not knowing what school will look like in the Fall has forced us to revamp and revisit how we can perform for children to bring them the messages of mental health, resilience, helpful

versus hurtful thoughts, how to breathe and manage emotions – key strategies that are needed now more than ever. The strength of any organization is how that organization can bend and re-invent and we are currently looking at ways to offer our programs at Sick Kids, Ronald McDonald House and in schools using new technologies this fall.

Pivoting to an online platform with performances for Mental Health Week during May and in partnership with the National Arts Centre through #Canada Performs have been tremendous and opportunities to share the work of Suitcase Theatre. Artistic Director, Tyler Check, has been the lead behind these online initiatives and social media platforms and credit must be directed to him for seeking out new technologies to ensure the message of *Stronger Together* and Suitcase Theatre was heard.

While the future of performances remains an unknown, what is very clear is how Canadians have turned to the arts like never before. Online performances, Zoom sing-a-longs, YouTube workshops, Instagram segments and Facebook Live shows have brought us all together when we were forced to be apart. Suitcase Theatre was able to pivot to an online platform, reimagine our content and programming, reinvigorate our vision to help children discover their true selves, celebrate their diversity and come together, stronger, through the arts.

End of Year Financial Statements for 2019 available upon request or online at Canada Revenue Agency

Lucie Gryś



Performers Benjamin Todd, Macayla Paris and Emily Meadows perform to a sold out audience at the launch of *Stronger Together: Opening Doors to Mental Health* at Solar Stage Wychwood Barns in September 2019.

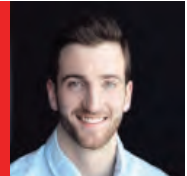


In February, Suitcase Theatre was invited to participate in the *Stop the Stigma* Symposium organized by students in the Toronto Catholic District School Board. Our cast performed *Stronger Together* for student ambassadors to convey helpful messages about mental health for children.

"We have really enjoyed our unique partnership with Suitcase Theatre. Their commitment to children's mental health and the myriad issues that children deal with is impressive. They find creative and innovative ways to weave important messages into all of their productions and truly demonstrate that we are "stronger together"."

- Susan Chamberlain, Executive Director, The George Hull Centre for Children and Families

A MESSAGE FROM THE ARTISTIC DIRECTOR



As Artistic Director for Suitcase Theatre, my goal for this year was to continue the work started by former Artistic Director Ryan Jacobs and to continue fostering dialogue and constructive conversations around the challenges facing today's youth.

Through the creation of a new show discussing mental health and wellness in a way that would be relatable and engaging for our young audiences, *Stronger Together: Opening Doors to Mental Health* was created. Although the past year has presented several unique and challenging obstacles, I am proud of the work that the incredible team at Suitcase Theatre has done to continue sharing our message through collaboration, conversation and community engagement.

The first half of 2019 was focused around the creation of our show *Stronger Together* through our exciting partnership with mental health professionals at the George Hull Centre. We had several extremely beneficial meetings at the George Hull Centre where our resident Music Director & Co-Writer Tristan Hernandez, Executive Director Lucie Grys, and myself, posed certain key questions pertaining to mental health that would end up becoming the backbone of *Stronger Together*. These questions included:

- What are the biggest challenges facing children today with regards to their mental health and wellness?
- What are some common misconceptions you see when talking with families about mental health?
- What are the main things you wish you knew about mental health when you were a kid?"

These questions allowed us to take a huge topic like mental health and boil down a few key concepts, exercises, and messages to convey to

our young audiences. As a team we all felt it was extremely important to talk about these issues in a way that honoured Suitcase Theatre's mission of bringing engaging and accessible arts experiences to children and families.

After workshopping, refining, and rehearsing this production throughout the summer of 2019, we debuted *Stronger Together* in late September

"We at Suitcase Theatre are committed to learning, growing, and adapting to whatever challenges we may face in the coming year so that we continue to provide engaging and accessible arts experiences to children and families."

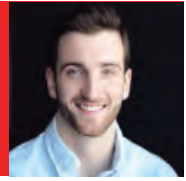
2019 to a sold-out public audience of arts educators, creative collaborators in the Canadian theatre industry, and most importantly children and their families. The response was overwhelmingly positive and helped us to be able to do over 30 school and community performances in the fall of 2019 despite the looming threat of strikes.

Stronger Together and its messages of mental health were received extremely well by both students and teachers and put us in a fantastic position for a jam-packed spring tour in 2020. Unfortunately, we would only be able to complete one week of this tour before the COVID-19 pandemic forced us to make the decision to cancel all upcoming tour dates.

Though the circumstances for the launch of *Stronger Together* were far from ideal, artists find a way to endure, adapt, and make the best out of any situation they are faced with. This is exactly what we at Suitcase Theatre did.

As Artistic Director, one of my main goals has always been to continue growing this company and extending the company's reach so that more students, schools, and families are able to access our content and join in the conversations we are trying to foster with regards to mental health and wellness. Throughout 2019 but more importantly during the isolation period in the spring of 2020, I worked hard to ensure that Suitcase Theatre was building a strong and engaging online presence

A MESSAGE FROM THE ARTISTIC DIRECTOR



through the use of social media and streaming platforms. During the creation of *Stronger Together* in the summer of 2019, we brought in a videographer to document the entire process. This not only left us with fantastic promotional material for the show but also allowed us to create fun and engaging “Meet the Cast” and “Meet the Creators” videos that were helpful in engaging our online audiences. I am proud to say that our social media following has more than doubled and continues to grow because of these efforts.

During the months of isolation, we were all facing it became extremely apparent just how useful our online presence as well as our online content were going to be in keeping our audiences engaged and a part of the conversation. The time and resources we put towards creating a professionally recorded cast album for *Stronger Together* paid off as during isolation our cast album has been streamed on both YouTube and Spotify over 1000 times. Our online Teachers Guide developed by Lynda Pogue featuring arts activities as a companion to *Stronger Together* has also been well received by both parents and educators.

On top of our previously recorded content, we also wanted to make sure we were not losing the incredible momentum we had created with our fall tour and set about figuring out how we could continue to contribute to arts education in our community as well as the country as a whole.

Firstly, we took it upon ourselves to stream a “Live Watch Party” of our opening night performance of *Stronger Together* in conjunction with a #ToiletPaperTuesday craft (another outreach initiative started on Suitcase Theatre’s Instagram page that helped to grow and engage our following online) as well as a discussion with Carm Viola, a mental health professional who helped us to create *Stronger Together*. This “Live Watch Party” was in support of Children’s Mental Health Week 2020 and was a huge success with over 100 viewers tuning in live and more than 900 viewers tuning in by the end of Children’s Mental Health Week.

Secondly, at the very beginning of the COVID-19 pandemic, the National Arts Centre in partnership with Facebook created the #CanadaPerforms series. Seeing how this initiative could further our ability to reach and engage new audiences online I submitted our show *Stronger Together* for a slot. We were selected to co-ordinate a live virtual reading of the show which not only allowed us to support our incredible cast of actors in a time of great uncertainty in the theatre industry but also was featured on the National Theatre Centre’s Facebook page, reaching over 1000 people.

Though the past year has presented many challenges, the work we have done at Suitcase Theatre has allowed us to stay relevant, engaged, and most importantly has kept us in a position where we have been able to provide some much needed joy, laughter, and music while the world faces these unprecedented times.

Moving forward, I will continue to grow our online presence while facilitating conversations with educators, families, and artists around what else we can do to be of service to our community. Education through the arts has a powerful ability to teach children empathy because it asks them to put themselves in someone else’s shoes and to think about what that other person might be feeling. This is something that is more important now than ever and we at Suitcase Theatre are committed to learning, growing, and adapting to whatever challenges we may face in the coming year so that we continue to provide engaging and accessible arts experiences to children and families.

Thank you to the entire team at Suitcase Theatre, the incredible community we have built both in schools as well as online, as well as to our amazing collaborators and partners for all of your support. If the past year has taught me anything it is that we are truly “Stronger Together”.

Tyler Check

"Suitcase Theatre delivered a great performance today. They did an excellent job explaining big topics in a kid-friendly way. Lots of things were covered, like validating the range of feelings we all experience, the importance of positive self-talk and determining the difference between a big and small problem. As a parent council, we were so proud host the show."

– Parent Council, Morse Street Public School

"We were fortunate enough to have Suitcase Theatre perform "Stronger Together" for our Brownies (grades 2 and 3 girls). The performance provided the girls information about mental health and it was nice to see that problems the characters encountered were common kid problems that frequently happen, so the girls could really relate. The performance quality was top notch and was it a great introductory experience to musical theatre. The show was filled with humour and wonderful, catchy songs! It was the perfect way to combine learning about mental health and the arts, while having fun!"

– Kelly Malcolmson, Girl Guide Leader, 139th Brownie Unit

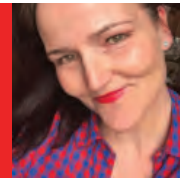
STRONGER TOGETHER SHOWS

Data as of March 2020 when the tour was cancelled due to COVID-19.

Sprucecourt Public School
Alexander Muir Public School
Gladstone Ave Junior Public School
St Victor Catholic School
George R. Gauld Junior School
David Hornell Junior Public School
Calico Public School
St. Julia Billiard Catholic School
Ancaster Public School
St. Martin de Porres Catholic School
Yorkwoods Public School
Santa Maria Catholic School
St. Bede Catholic School
Courcellette Public School
Epiphany of Our Lord Catholic Academy
Owen Public School
Warren Park Junior Public School
St. Francis de Sales Catholic School
Clairlea Public School
St. James Catholic School
St. John XXIII
St. Nicholas Catholic School
Humbercrest Public School
Armour Heights Public School
Cedarbrook Public School
Immaculate Heart of Mary Catholic School
Highfield Junior Public School
Driftwood Public School
St. Angela Merici Catholic School
Morse Street Public School
Transfiguration of Our Lord Catholic School
St. Charles Catholic School
Sunnylea Junior Public School
The Girl Guides of Canada
Solar Stage at Wychwood Bards
Stop the Stigma Mental Health Symposium
Sick Kids Hospital
Ronald McDonald House
Ken Cox Community Centre and The City of Toronto



A MESSAGE FROM THE EDUCATION MANAGER



We had an exciting and busy start to 2019. With the launch of *Stronger Together. Opening Doors to Mental Health* we began revamping our workshop program and created a new brochure to highlight workshops focusing on mental health and well-being. In addition to existing popular workshops, Dance Your Way, Confidence Creates Character, Superkids! and Emotions in Motion, we added four new workshops promoting confidence, expression and healthy mindsets:

- We've Got Talent — an interactive workshop keying on the basics of singing, connection and collaboration.
- What a FEELING! — a collaborative workshop where students articulate feelings through music and dance.
- Speak Your Mind— a synergistic, hands-on workshop encouraging students to use spoken word to express themselves in a creative, healthy manner.
- #LOL — a humour-based workshop designed to help participants unplug, lighten up, stretch imaginations and look for humour in all situations.

With the dramatic growth of our programs we hired four additional artist-educators: Joan Barrington is a therapeutic clown practitioner who launched Ontario's first Therapeutic Clown Program at The Hospital for Sick Children in 1993. She later became co-founder and director of Therapeutic Clowns Canada Foundation. Joan created and leads our #LOL workshop; Tereka Tyler Davis started her arts training at the tender age of 6 at Young People's Theatre and has studied various dance forms over the years, including modern, traditional folk forms (West African and Afro Caribbean), ballet, jazz and hip hop. Tereka created and leads our What a FEELING! workshop; Andrea Massoud, a professional performer who created and leads our Speak Your Mind workshop.

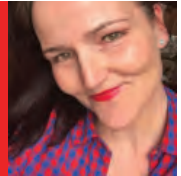
Passion and spirit have always been the hallmark of SuitcaseTheatre performers, and we're confident our new talent will carry on that bold tradition... and then some.

Along with creating a new mental health package of workshops to launch in the fall of 2019, we also included curriculum links. With the help of our wonderful artist-educator, Shannon Hancocks (an Ontario Certified Teacher), we included curriculum outcomes for each workshop. Descriptive synopses including learning outcomes are crucial in helping educators choose workshops that will most benefit their classroom.

Our relationships with the Toronto District School Board and Toronto Catholic District School Board, daycares, community centres, children's hospitals and The Girl Guides/ Boys Scouts of Canada continue to strengthen and grow. This year marked a repeat visit to York Catholic District School Board and an inaugural visit to the Dufferin Peel Catholic District School Board. However, with the looming cuts to education we did notice a dip in our workshop bookings in the fall of 2019.

Typically starting in October, my role as workshop manager becomes quite busy as I am inundated with inquiries about workshop bookings for the upcoming school year. Over the past few years we have seen a dramatic increase of our workshop bookings but in 2019 we saw a slight decline of 45 paid bookings compared to the 65 paid bookings of 2018. With cuts to education and the possibility of a strike, the fall season was a quiet one for our workshop program compared to past years. In late February, the EFTO moved into phase 6 of work-to-rule and all remaining school bookings were cancelled. Initially we had planned to reschedule come spring but then COVID-19 arrived and schools have remained closed since March 12, 2020.

A MESSAGE FROM THE EDUCATION MANAGER



With the continued generous support of donors, we were able to offer two workshops monthly at Ronald McDonald House. We also brought the creative, lively and interactive Imagination Station to Sick Kids monthly (filmed in Marnie's Studio). Our big-hearted artist-educator, Morgan Joy, is the creator and lead of the Imagination Station. Through Morgan, Suitcase Theatre recently partnered with Dramaway—an organization that provides creative arts programming for individuals of all abilities with special needs. Quite often one of Morgan's Dramaway friends joins her at the Imagination Station on camera to share a story, a talent and/or discuss fears and challenges.

Despite all the challenges 2019 and 2020 have brought we had a successful and fulfilling year reaching a number of children with our high-quality programming. As I write this it is still unknown if and when the schools will re-open in the fall, and if they do what that might look like. We are hopeful we can adapt and move forward accordingly so we can continue to make the arts accessible to everyone.

Victoria Snell

"The music and drama event provided by Suitcase Theatre was amazing! Throughout the organization of the workshop their staff ensured that the activities would be appropriate for a group of children with Autism whom all have varying needs and levels of support. They provided a fun and inclusive environment for all the children and it was wonderful to see them all actively participate in a range of activities with the instructor Adam. I will definitely be booking an event with them in the future."

- Sonia Stellato, M.ADS, BCBA
Senior Therapist, AlphaBee ABA/
IBI Services

"The staff here at RMHC Toronto School just wanted to reach out and wish you and your staff a happy summer! Thank you for all that you guys did for our students this school year. We know the kids loved it and the workshops are a definite highlight to their month. We are excited to continue to work with you in the future. Please pass this along to everyone that came in."

- Ryan Day, Teacher, Ronald McDonald House



Monthly workshops at Ronald McDonald House give children the freedom of expression.



Stronger Together was aired on the closed circuit TV system around SickKids hospital for all to enjoy.



Victoria Snell, Workshop Manager, Dr. Katie Doering, Principal, and Arts Educator Adam Bailey sing-a-long at Ronald McDonald House.



Children enjoy role-playing with puppets during a class workshop about emotions.

WORKSHOP LOCATIONS

AlphaBee Inc.
 Denlow Public School
 Driftwood Public School
 First Portuguese Canadian Cultural Centre
 Glen Park Public School
 Kingsway College School
 Neilson Park Creative Centre
 Norseman Junior Public School
 Our Lady of Providence Elementary School
 St Gregory Catholic School
 St Kateri Tekakwitha Catholic Elementary School
 St Nicholas of Bari Catholic School
 West Preparatory Junior Public School
 Weston Memorial Junior Public School
 Wychwood Tigers Daycare
 163rd Brownie Group
 450th Girl Guides
 Ronald McDonald House
 The Hospital for Sick Children

OUTREACH PROGRAMS

Community Groups, Sick Kids Hospital and Ronald McDonald House

With the continued support of Boehringer Ingleheim Canada Inc., Johanna Weaver and Rosedale United Church Outreach Committee, Suitcase Theatre continued their engaging and inspiring monthly programs at Sick Kids Hospital and Ronald McDonald House.

Suitcase Theatre led over twenty interactive and engaging workshops to our outreach partners at Ronald McDonald House, Sick Kids Hospital and AlphaBee for children living with autism with the generous support of Suitcase Theatre donors.



SUITCASE THEATRE ARTS AND EDUCATION OUTREACH INC.

Email:
info@suitcasetheatre.com

Twitter: SuitcaseTheatre

Mailing address:
2336 Bloor Street West
P.O. Box 84553
Toronto, ON M6S 4Z7

Charitable registration number: 81769 5190 RR0001

Phone:
647-654-7529 (PLAY)

Facebook: SuitcaseTheatreToronto

Location of camp programs:
All Saints' Kingsway Church
2850 Bloor Street West
Etobicoke, ON